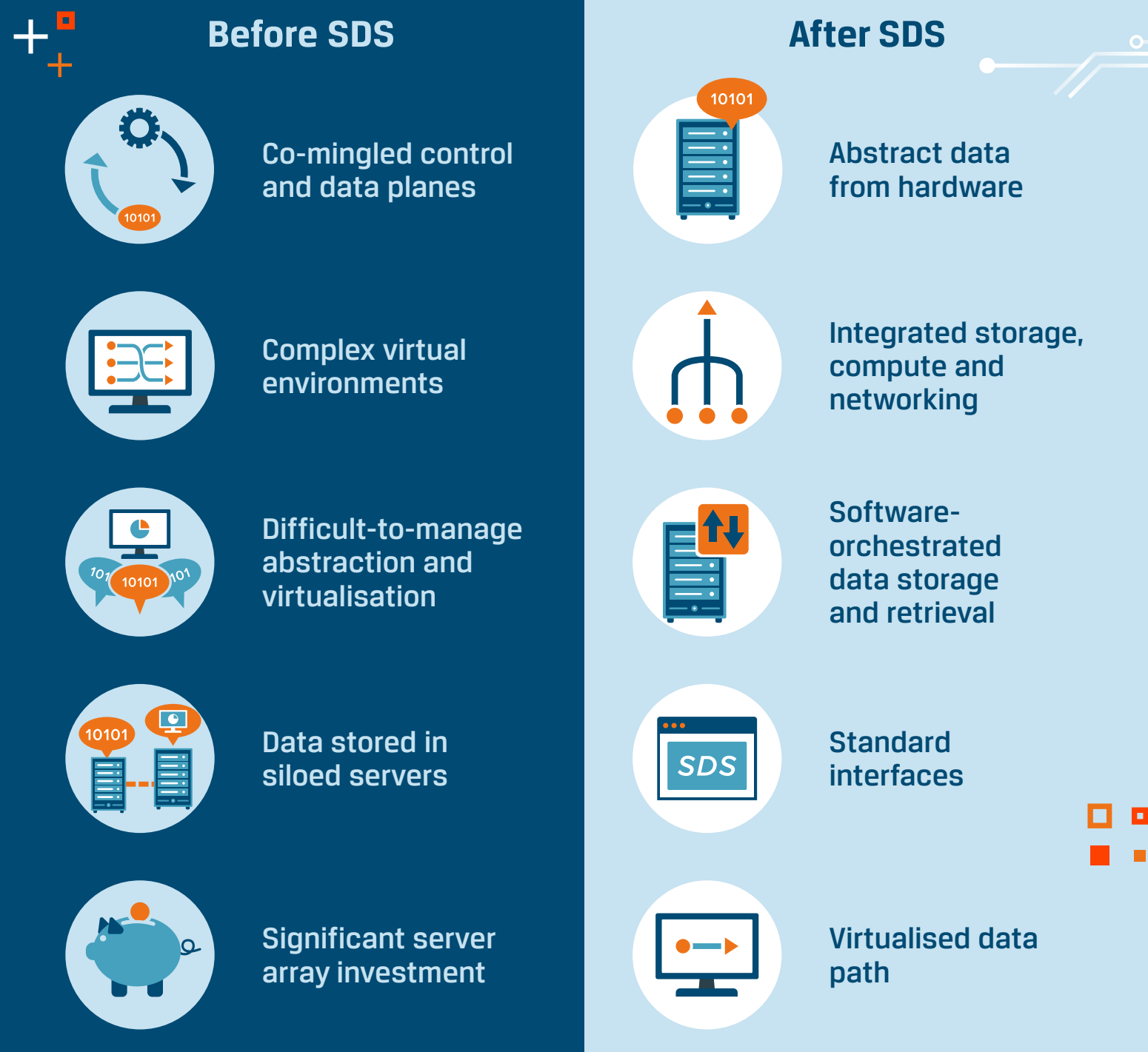


Solid State Drives The best hardware choice for Software Defined Storage solutions

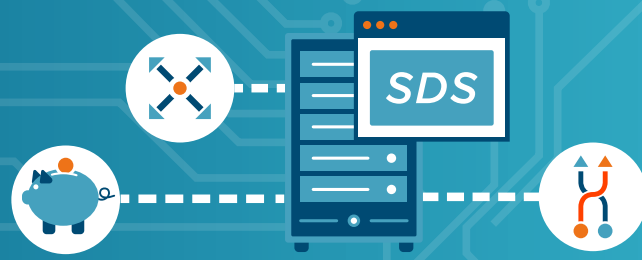
Software defined storage (SDS) is a fast-growing solution for data storage that helps resolve a growing but fundamental issue: How to store and retrieve massive amounts of data.

Networking approach



In summary

Software Defined Storage (SDS) separates storage software and software services from underlying hardware to yield cost benefits, flexibility, and scalability.



SDS Benefits rely on smart hardware decisions

SSD reduces the need for and cost of future hardware purchases, and that's a big deal. But hardware quality matters. That's where SSDs pull far ahead of HDDs.



Survives vibrations and drops



Instant data access



Runs cool and quiet

Choose the best SSD for your application

- Online Transaction Purchase (OLTP)
- Business Intelligence (BI)
- Content Display Network (CDN)
- Web Hosting/Streaming
- Internet of Things (IoT)
- Edge Computing

SATA SSD

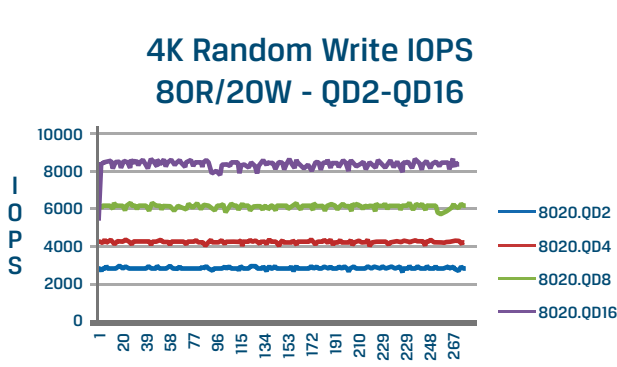
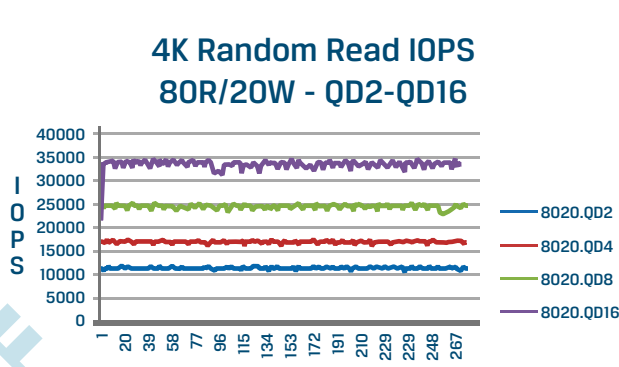
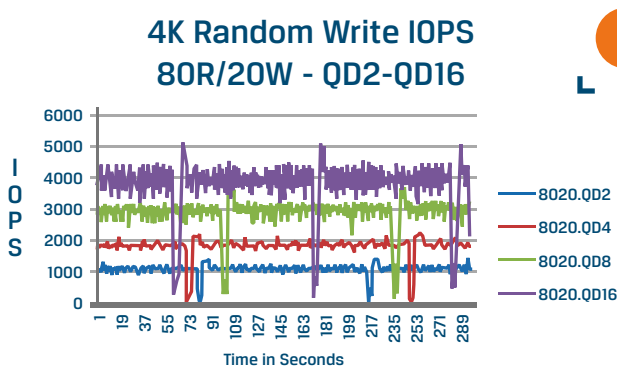
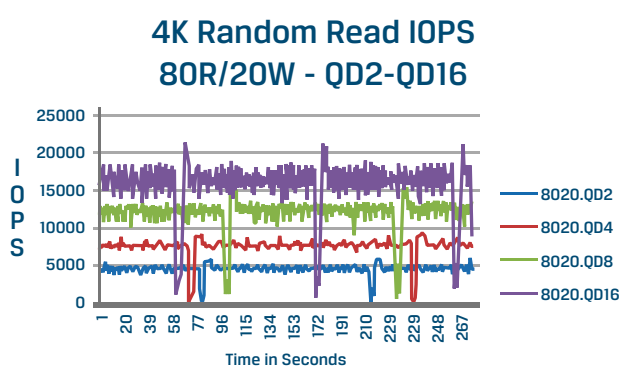
- 10 times faster than HDD
- Price/Capacity ratio
- Plenty of compatible legacy systems

NVMe SSD

- Up to 10 times faster than SATA
- Lean and flexible form factor
- Optimised standard for flash technology

Consistent and sustainable performance

Client vs. Enterprise IO Performance Consistency (QoS)



Kingston's Enterprise Data Center (DC) SSDs are designed with a stringent set of development requirements and a thorough testing process. This results in consistency for workloads requiring a balance of high random read-and-write IOPS performance. Built-in Power Loss protection to mitigate the risk of data loss in the event of unexpected power failure.

IT teams around the globe trust Kingston, the world's largest independent manufacturer of memory and storage products.

We know that planning the right solution requires an understanding of your project's security goals. Let Kingston's experts guide you:
www.kingston.com/ssd/server/ask-an-expert